

===== 'MSTEWART' - Vibration Spectrum Survey =====

Customer: MSTEWART
Started: 04/16/2007 18:15.55 Finished: Yes
A/C Reg: A/C Total TM: 0.0
Eng S/N: TSO: 0.0
Eng Pos: 0 TSN: 0.0

2020 Analyzer Information

Owner: Sport Air Inc. Serial No: 01058
Addr: Versions:
 3485 Stillridge Dr. Boot ROM: 2.02
 Alpharetta, GA. Application: 3.1
 30022
Phone: 404-403-9208 Cal Date: 01/26/2005 12:56.55

AvTrend License Information

Owner: TEC
Serial Number: License Number: 813BF310
Level: Bronze Type: Temporary

Setup: 9-3 VERT
Resolution: 400
Average Type: Exp Blocks in Average: 4
Min Freq: 0.00 Max Freq: 10000.00
Frequency Units: RPM

Channel A (ChanA): 991D-1
 (20.000 mVolts/g's, Normal Polarity, Single-Ended)
 Full-Scale Range: 1.00 IPS Peak

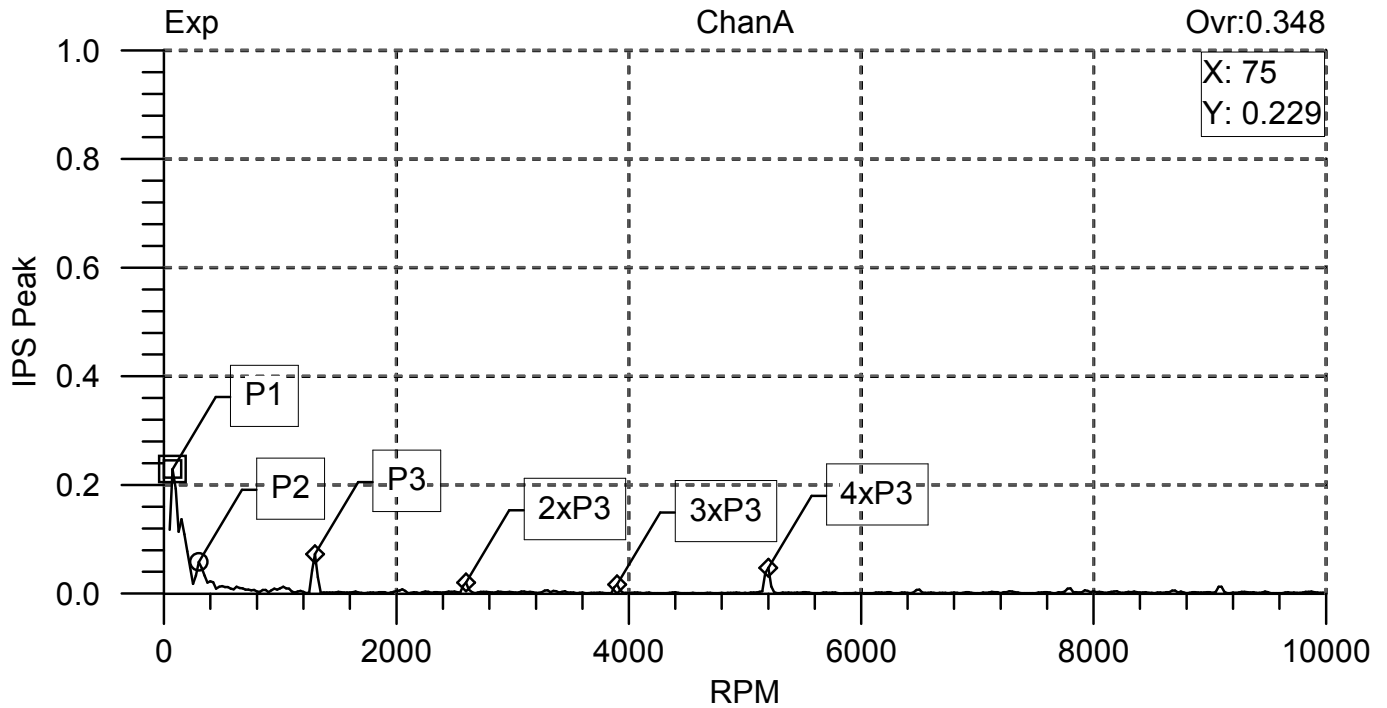
Condition 1: 2600
Condition 2: 2400
Condition 3: 2200
Condition 4: 2000

Spectrum Limits: None

Condition 1 (2600): Data Taken
Condition 2 (2400): Data Taken
Condition 3 (2200): Data Taken
Condition 4 (2000): Data Taken

Customer: MSTEWART
 Started: 04/16/2007 18:15.55
 A/C Reg:
 Condition: 2600
 Channel A: ChanA

Finished: Yes
 A/C Total TM: 0.0



==== Peak List =====

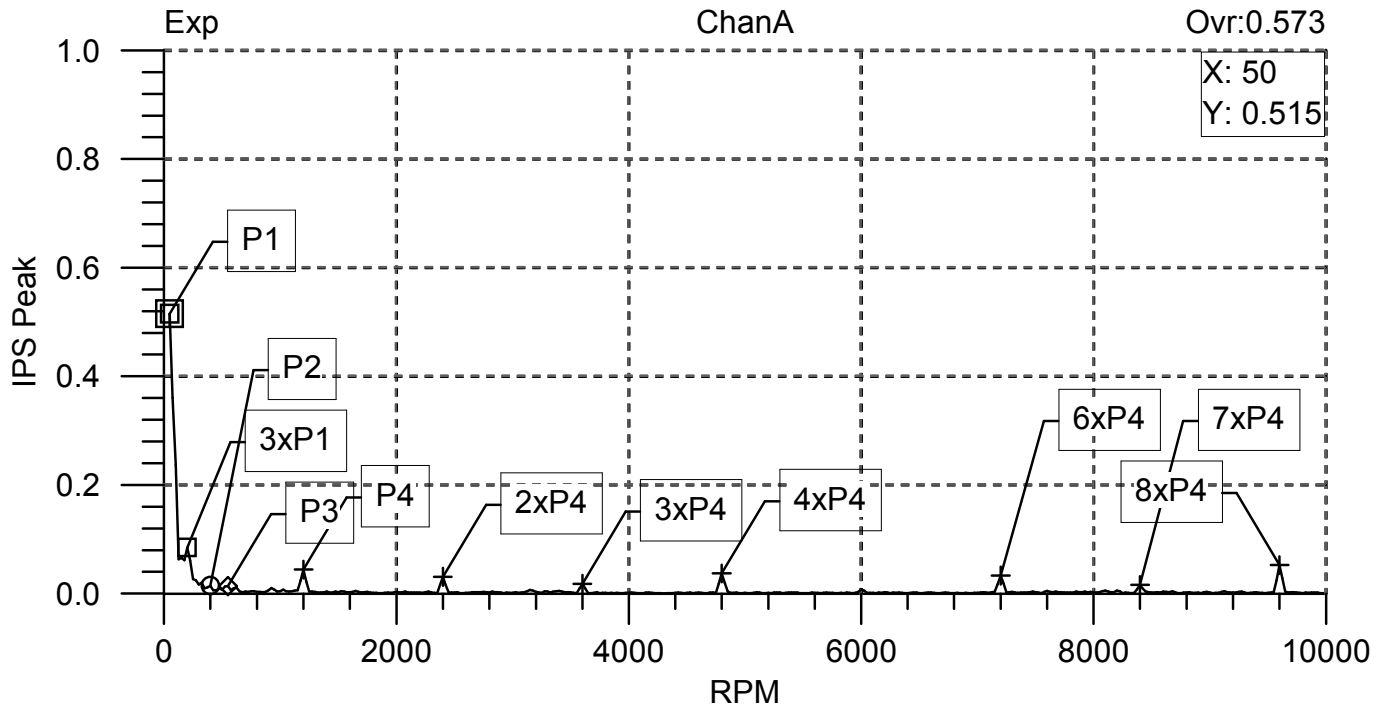
X (RPM)	Y (IPS Peak)	Frequency (RPM)	Amplitude (IPS Peak)	Label
75.000000	0.228872	85.571648	0.278228	P1
300.000000	0.058038	308.287872	0.073495	P2
1300.000000	0.072411	1297.425171	0.072643	P3
2600.000000	0.020622	2595.033447	0.021469	2xP3
3900.000000	0.016716	3895.295898	0.017338	3xP3
5200.000000	0.047415	5191.912109	0.050577	4xP3

----- Totals -----

Label	Overall (IPS Peak)	
P1	0.278228	
P2	0.073495	
P2	0.073495 Sync	0.092718
Non Sync	1.731e-01	

Customer: MSTEWART
 Started: 04/16/2007 18:15.55
 A/C Reg:
 Condition: 2400
 Channel A: ChanA

Finished: Yes
 A/C Total TM: 0.0



==== Peak List =====

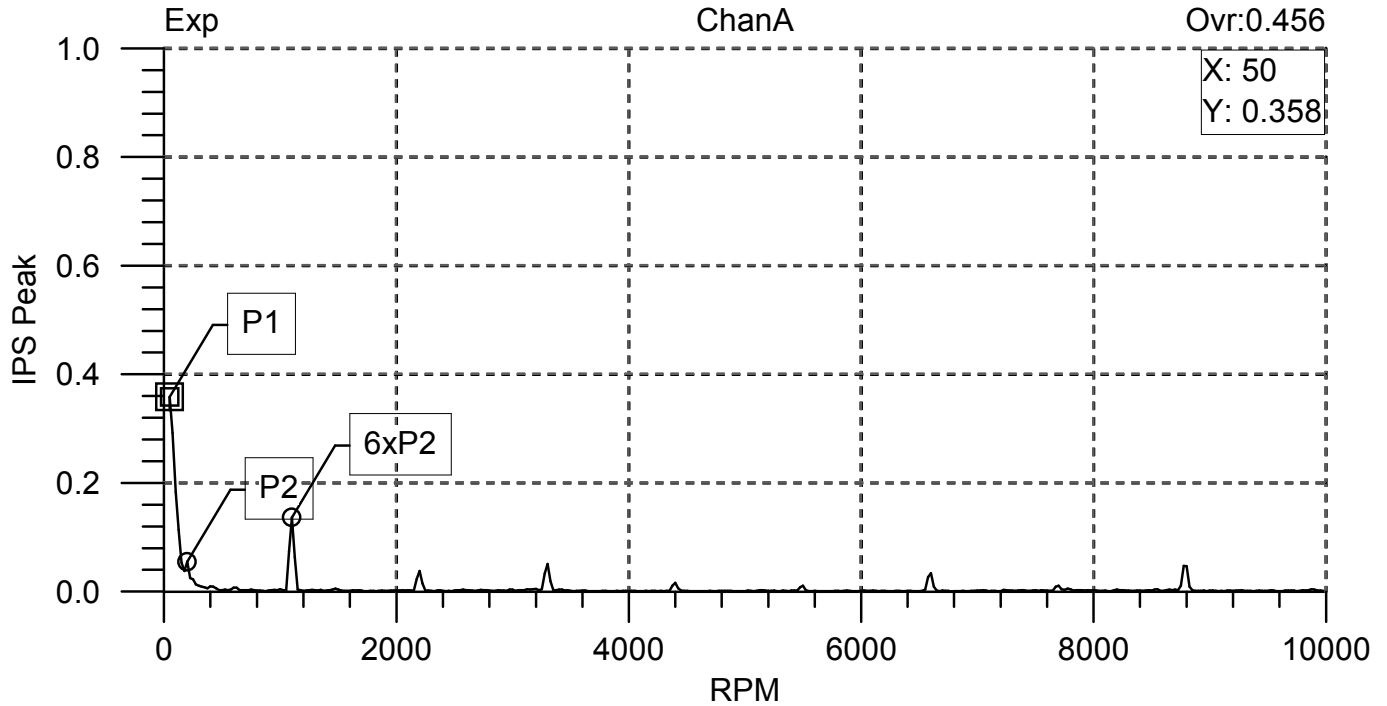
X (RPM)	Y (IPS Peak)	Frequency (RPM)	Amplitude (IPS Peak)	Label
50.000000	0.515000	63.418636	0.548599	P1
200.000000	0.084440	190.764404	0.114182	3xP1
400.000000	0.014607	390.273407	0.018703	P2
550.000000	0.013904	548.367493	0.019492	P3
1200.000000	0.044212	1198.921997	0.045253	P4
2400.000000	0.030855	2399.727051	0.030985	2xP4
3600.000000	0.017888	3599.680420	0.018238	3xP4
4800.000000	0.037338	4800.508789	0.037609	4xP4
7200.000000	0.033354	7200.753418	0.034141	6xP4
8400.000000	0.016013	8402.464844	0.016498	7xP4
9600.000000	0.052336	9601.438477	0.052769	8xP4

----- Totals -----

Label	Overall (IPS Peak)
P1 Sync	0.560356
P2	0.018703
P3	0.019492
P3 Sync	0.094749
Non Sync	7.123e-02

Customer: MSTEWART
 Started: 04/16/2007 18:15.55
 A/C Reg:
 Condition: 2200
 Channel A: ChanA

Finished: Yes
 A/C Total TM: 0.0

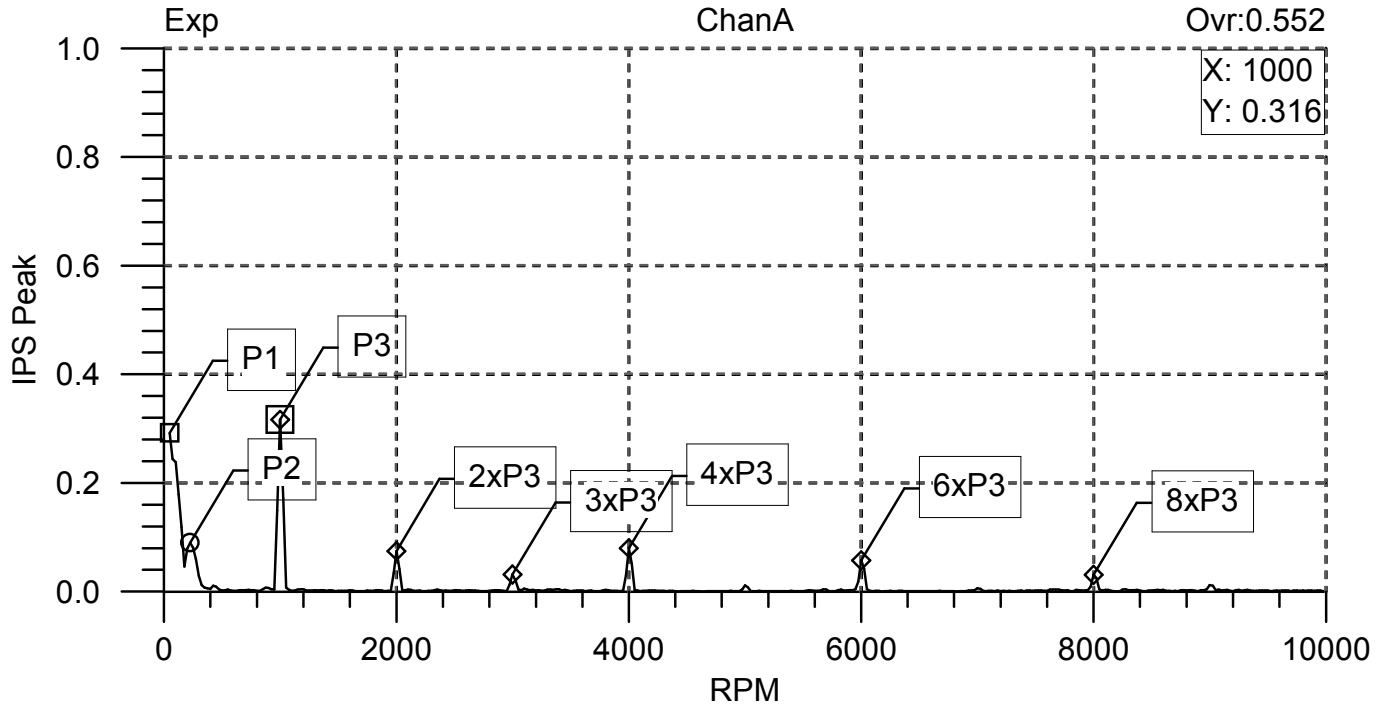


```

===== Peak List =====
X           Y           Frequency      Amplitude
(RPM)      (IPS Peak)  (RPM)        (IPS Peak)  Label
-----
50.000000  0.358383   65.367188   0.405606   P1
200.000000 0.054992   183.730042  0.074898   P2
1100.000000 0.136229   1098.696899 0.136778   6xP2
-----
----- Totals -----
Label      Overall
          (IPS Peak)
-----
P1         0.405606
P1         0.405606 Sync      0.155942
Non Sync   1.388e-01
    
```

Customer: MSTEWART
 Started: 04/16/2007 18:15.55
 A/C Reg:
 Condition: 2000
 Channel A: ChanA

Finished: Yes
 A/C Total TM: 0.0



==== Peak List =====

X (RPM)	Y (IPS Peak)	Frequency (RPM)	Amplitude (IPS Peak)	Label
50.000000	0.292065	71.464790	0.366581	P1
225.000000	0.089908	227.782852	0.133133	P2
1000.000000	0.316437	1001.165710	0.317881	P3
2000.000000	0.074676	2001.720337	0.075097	2xP3
3000.000000	0.031402	3004.538330	0.032502	3xP3
4000.000000	0.079910	4004.367188	0.081463	4xP3
6000.000000	0.057335	6006.848145	0.060529	6xP3
8000.000000	0.030777	8008.463379	0.033621	8xP3

----- Totals -----

Label	Overall (IPS Peak)
P1	0.366581
P2	0.133133
P2	0.133133 Sync
Non Sync	1.814e-01
	0.345217